



SuperDataScience

# REASONS WHY TABLEAU TOP BI TOOL



## 1. INSTANT AND INTERACTIVE VISUALIZATIONS

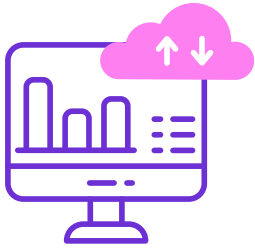
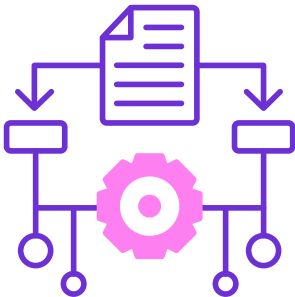


Tableau is specializing in beautiful visualizations and therefore it offers a huge amount of insights with simple drag-and-drop-features, thus helping you easily analyze key data and share crucial insights. It will make visualizations out of the complex data so the clients can easily understand it. It can't be done by simply delivering a spreadsheet. Tableau has made data analyzing easy, fast and beautiful. Users can select any visualization template from the library or they can create their own custom one.

## 2. EASY TO USE



Compared to other BI tools, Tableau allows you to create a variety of visualizations in just a few seconds! You can use different functionalities to perform complex tasks so all the questions will be easily answered.

It is easy to connect with database views. It also helps to optimize queries' performance. Moreover, Tableau has some very important inbuilt features like extract, transform, and loading. Due to these features, you can modify data types, split or join data, concatenate data and also blend data, etc. Furthermore, it is also possible to create groups, sets or data bins. This implies that there is no need for any separate ETL tool to do so.

## 3. HIGH PERFORMANCE



Tableau is known for its great visuals; however, the overall performance is one of the key strong features of this tool. It has capabilities of quickly operating huge amounts of data and create value for customers.

## 4. INTEGRATES WITH SCRIPTING LANGUAGES



While users can perform basic calculations in Tableau itself, you might want to go ahead and do some complex calculations! The BI tool lets you integrate with R or Python, thus helping you amplify data with visual analytics.

## 5. MULTIPLE INFORMATION SUPPLY CONNECTIONS

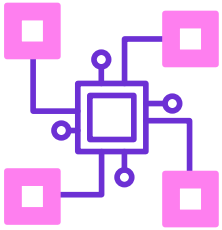
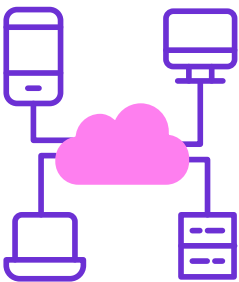


Tableau establishing connections with several information sources, like HADOOP, SAP and sound unit Technologies, improves information analytics quality and allows the making of a unified, informative dashboard. Such a dashboard grants access to the desired info for any user.

## 6. COLLABORATION (TEAM FRIENDLY TOOL)



You can easily create dashboards, publish and share them with co-workers, partners, and customers without any need for programming knowledge. Tableau is intuitive, facilitating ease-of-use software and allowing data analysis using drag-and-drop functionality. It stimulates collaboration, allowing for group analytics and keeping all team members updated at all times. Users can also access the software from anywhere at any time as the app comes with a native mobile app.

## 7. THRIVING COMMUNITY



Various communities for Tableau users are available and can answer all of the questions you might have. Apart from it, there is a large collection of resources like online guides, forums and training available everywhere on the internet if you want to use Tableau. Moreover, Tableau has its own community as well which is engaging and enthusiastic and can resolve any of the queries.

